

GPS/WAAS CHART PLOTTER

Model **GP-25** Model **GP-27**



5" GPS/WAAS COLOR CHART PLOTTER

GP-25

7" GPS/WAAS COLOR CHART PLOTTER

GP-27

- Clear-view color LCD(TFT)
- Intuitive operation with touch screen interface
- High Performance GPS receiver
- Internal GPS antenna for simple and easy installation
- C-Map Max chart bundled on SD card (Standard supply)
- Internal memory: Waypoint/Track 30,000 points each, Route 200 routes
- North-up or Course-up chart display
- Low power consumption
- Variety of information displayed: Currents prediction, Tides, etc.
- Alarm functions: Arrival, XTE, Shear, Depth, Anchor, Trip, Speed
- Display modes including:
 - Plotter
 - Plotter with Navigation Data Box
- Waterproof display (IP56)



Easy to customize the Data Box



Plotter with main button

Intuitive operation with touch screen interface

GPS/WAAS CHART PLOTTER

Model GP-25 (5") / Model GP-27 (7")

SPECIFICATION

Official name of equipment

GPS/WAAS PLOTTER

Display Unit

Screen Type Color TFT LCD
 Screen Size 5" (GP-25) 7" (GP-27)
 Resolution GP-25: 800 x 480 pixels(WVGA)
 GP-27: 800 x 480 pixels(WVGA)
 Language English, Chinese, Thai, Vietnamese, Malaysian, Indonesian
 Display Modes Plotter, Plotter with Nav Data, GPS status
 Memory Capacity 30,000 points each for ship's track and waypoints
 200 planned routes (Max. 50 points per route)
 Interface IEC61162-1, NMEA 0183 (ver. 1.5/2.0/3.0) 1 port
 Outputs: AAM, APB, BOD, BWC, GGA, GLL, GNS, RMB, RMC, VTG, XTE, ZDA
 Inputs: DBT, DPT, DSC, DSE, MTW, TLL, VHW
 USB*: 1 port (2.0) *For maintenance only
 SD card Slot: 1 slot (Acceptable up to 32 GB)
 Electronic chart: C-MAP Max

Power Supply

12-24 VDC
 GP-25: 240 mA - 120 mA
 GP-27: 560 mA - 280 mA

GPS Receiver Characteristics

Receive Type GPS: 12 channels WAAS: 1 channel
 Receiving Frequency L1 (1575.42 MHz)
 Time to First Fix Ave 105sec (Cold start)
 Tracking Velocity 500 m/sec (972kt.)
 SBAS WAAS, EGNOS, MSAS

Equipment List

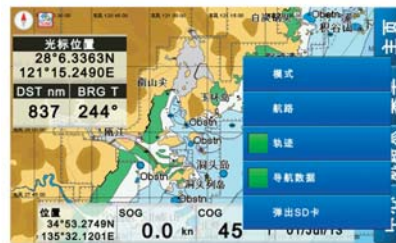
Display unit GP-25/27, Installation materials and standard spare parts

Option

- GPS antenna GPA-017

Environment

Temperature -15°C to +55°C
 Water-Proofing IP56



Chinese



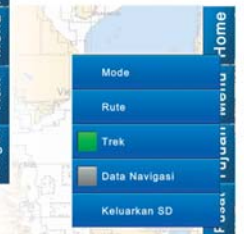
Thai



Vietnamese



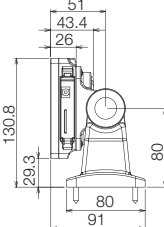
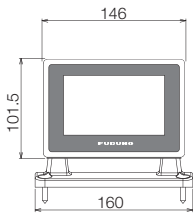
Malaysian



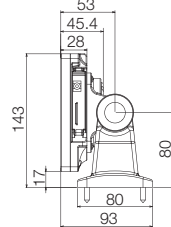
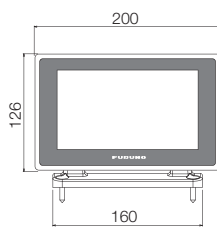
Indonesian



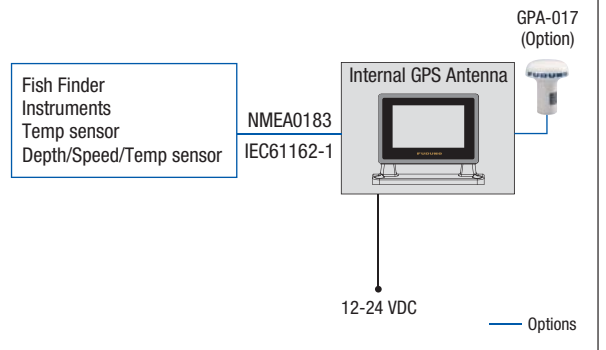
GP-25
0.54 kg 1.2 lb



GP-27
0.76 kg 1.67 lb



(Unit: mm)



All brand and product names are registered trademarks, trademarks or service marks of their respective holders.

SPECIFICATIONS SUBJECT TO CHANGE WITHOUT NOTICE
 PLEASE READ MANUAL BEFORE USING THE UNIT

FURUNO ELECTRIC CO., LTD.
Nishinomiya, Hyogo, Japan
www.furuno.com

FURUNO U.S.A. INC.
Camas, Washington, U.S.A.
www.furunousa.com

FURUNO (UK) LIMITED
Havant, Hampshire, U.K.
www.furuno.co.uk

FURUNO FRANCE S.A.S.
Bordeaux-Mérignac, France
www.furuno.fr

FURUNO ESPAÑA S.A.
Madrid, Spain
www.furuno.es

FURUNO DANMARK A/S
Hvidovre, Denmark
www.furuno.dk

FURUNO NORGE A/S
Ålesund, Norway
www.furuno.no

FURUNO SVERIGE AB
Västra Frölunda, Sweden
www.furuno.se

FURUNO FINLAND OY
Espoo, Finland
www.furuno.fi

FURUNO POLSKA Sp. z o.o.
Gdynia, Poland
www.furuno.pl

FURUNO EURUS LLC
St. Petersburg, Russian Federation
www.furuno.com.ru

FURUNO DEUTSCHLAND GmbH
Rellingen, Germany
www.furuno.de

FURUNO HELLAS S.A.
Piraeus, Greece
www.furuno.gr

RICO (PTE) LTD
Singapore
www.rico.com.sg

13063SK Printed in Japan
 Catalogue No. N-874b

