



EM-TRAK – COMMITTED TO VESSEL SAFETY & SECURITY

With over twenty five years of product design and engineering heritage our products offer the very best in quality engineering, reliability, usability and operational performance. To achieve this unique mixture of quality and performance we develop and deploy the most advanced core technologies coupled with proven professional standard product design.

EM-TRAK WARRANTY & SUPPORT

Em-trak is committed to providing the highest level of customer service. Our comprehensive global warranty ensures that in the unlikely event of a problem it will be resolved to your full satisfaction in the shortest possible time.

Further information about our warranty programme and instant advice and support for all our products can be obtained from our web site www.em-trak.com or your local authorised em-trak dealer.

The em-trak A200 is an aid to navigation and must not be relied upon to provide accurate navigation information. AIS is not a replacement for vigilant human lookouts and other navigation aids such as Radar. The performance of the A200 may be seriously impaired if not installed as instructed in the user manual, or due to other factors such as weather and or nearby transmitting devices. Compatibility with other systems may vary and is reliant on the third party systems recognising the standard outputs from the A200. em-trak reserves the right to update and change these specifications at any time and without notice.

Head Office:

em-trak Marine Electronics Ltd
Wireless House
Westfield Industrial Estate
Midsomer Norton
Bath BA3 4BS
United Kingdom

T +44 (0)1761 409 559
F +44 (0)1761 410 093
E enquiries@em-trak.com
W www.em-trak.com

USA Office:

em-trak Marine Electronics Ltd
470 Atlantic Avenue
4th floor
Boston
02210
USA

T +1 617 273 8395
F +1 617 273 8001
E enquiries@em-trak.com
W www.em-trak.com

EM-TRAK A200 FEATURES & SPECIFICATION

DIMENSIONS & WEIGHT

- > 152mm x 165mm x 79mm (W x H x D)
- > 2 kg

DATA INTERFACES

- > NMEA0183 (IEC61162-1/2) bi-directional ports x3 (External Display, Pilot Port, Long Range/ DGNSS)
- > NMEA0183 (IEC61162-1/2) sensor inputs x3
- > DGPS correction data input (ITU-R M.823-2)
- > Alarm Relay Output
- > NMEA2000 > WiFi

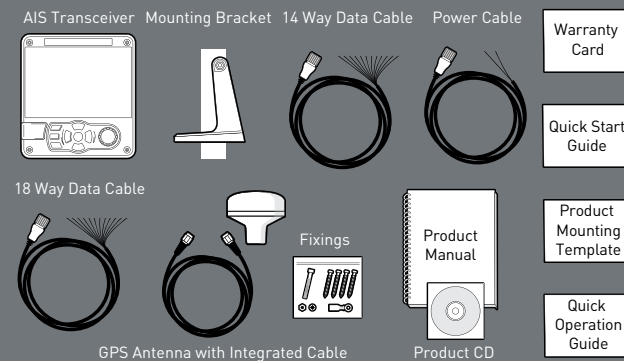
POWER

- > 12 to 24V DC
- > Power consumption < 12W

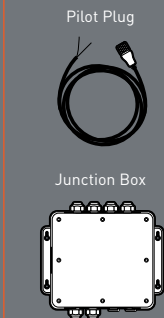
CERTIFICATION

- > CE marking under RED for Europe
- > FCC > USCG > ISED (Industry Canada)
- > Dual SOLAS and Inland Waterway
- > Fully compliant to International Maritime Organisation (IMO)
- > Marine Equipment Directive (MED) compliant

WHAT'S IN THE BOX



ACCESSORIES





PROFESSIONAL STANDARD RELIABILITY

Product Code: 425-0012

A200

AIS CLASS A





THE A200 IS A FULLY CERTIFIED AIS CLASS A WHICH DELIVERS A NEW LEVEL OF PERFORMANCE, RELIABILITY AND FUNCTIONALITY.



PRODUCT HIGHLIGHTS

- > Fully certified (SOLAS & Inland Waterway)
- > Water and weather proof (IP66 & IP67)
- > Integrated high-resolution colour display
- > Full electronic chart engine and display
- > Integrated long range WiFi connectivity
- > Dual NMEA0183 & 2000



> WEATHER PROOF

Completely water and weather proof IP66 and IP67 with anti shock and vibration.



> HD COLOUR DISPLAY

Full charting (CMAP), dual text & graphic interface with day and night display modes.



> ERGONOMIC INTERFACE

Robust buttons and rotary knobs ensure easy and reliable operation in all conditions.



> CONNECTIVITY INTELLIGENCE

NMEA0183, 2000 and WiFi make connectivity with other bridge systems quick and easy.

› KEY FEATURES

The A200 is the world's most sophisticated, fully integrated, globally certified high performance AIS Class A transceiver.

Proven, superior real world AIS message receive and transmit and message processing performance is delivered by advanced core SDR AIS technology from the global leaders in AIS technology - SRT Marine Systems Plc. This state of the art technology ensures you see more targets more of the time at maximum range.

The integrated high visibility full colour display delivers a huge range of functionality within an intuitive multi-lingual menu system that makes day to day use of the A200 easy. A full colour HD screen coupled with clear graphic and text display allows you maximise your benefit from the wide range of functionality. Functionality that includes detailed charting with AIS target overlay, simple AIS radar display, multiple AIS target filters, alarm management and MOB tracking to name just a few.

Despite the sophistication and performance, the A200 is engineered from the ground up to be the toughest AIS transceiver. IP66 water and weather proof, coupled with vibration and shock resistance means that the A200 can be installed and operated in any marine environment - internal or external.

The unique combination of the A200's performance, functionality and toughness makes it the ideal choice for all commercial or military users who demand optimal performance and reliability.

- › Single fully integrated Class A transceiver
- › Water and weather proof - IP66 & IP67 certified
- › Integrated WVGA colour display
- › Full electronic chart operation
- › Multi-lingual menu options
- › Day light and night display modes
- › Integrated long range WiFi
- › Dual NMEA0183 and NMEA2000
- › Ruggedized - temperature/shock protection
- › MOB & SAR alert and tracking system
- › Internationally certified - SOLAS, IMO, USCG, FCC, EU, CCNR, Industry Canada
- › Continuous internal fault check & diagnosis system
- › Intelligent connectivity for all bridge systems: Gyrocompass, ECDIS, VHF DSC etc
- › Receives and decodes all AIS message types
- › Pilot port

› A200-BLACK FOR NAVY & COAST GUARDS

The A200 Black provides additional custom functionality such as sophisticated encryption, enhanced satellite detection and other features for Navies and Coast Guards. Contact us with your precise requirements.

› FEATURE HIGHLIGHTS

INNOVATIVE MOB FUNCTIONALITY



Upon receipt of a MOB/SART alert, the A200 allows you to easily locate and track the signal providing continuous clear bearing and distance information in real time.

ELECTRONIC NAVIGATION CHART (ENC)



The A200 has an integrated powerful electronic chart engine supplied as standard with a global base chart. Detailed CMAP charts can be added via the SD card interface.

THE EM-TRAK RANGE

